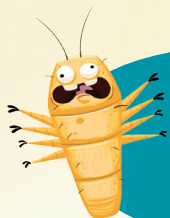


# TREATMENT IS MADE SIMPLE WITH XDEMVY®



Every drop is important! Stay on top of your treatment with XDEMVY.

**One drop in each eye, twice a day (~12 hours apart), for 6 weeks.**  
Set an alarm and track your doses!

Start Date: \_\_\_\_\_

	Monday	Tuesday	Wednesday	Thursday	Friday	Saturday	Sunday
Week 1	AM	AM	AM	AM	AM	AM	AM
	PM	PM	PM	PM	PM	PM	PM
Week 2	AM	AM	AM	AM	AM	AM	AM
	PM	PM	PM	PM	PM	PM	PM
Week 3	AM	AM	AM	AM	AM	AM	AM
	PM	PM	PM	PM	PM	PM	PM
Week 4	AM	AM	AM	AM	AM	AM	AM
	PM	PM	PM	PM	PM	PM	PM
Week 5	AM	AM	AM	AM	AM	AM	AM
	PM	PM	PM	PM	PM	PM	PM
Week 6	AM	AM	AM	AM	AM	AM	AM
	PM	PM	PM	PM	PM	PM	PM

## IMPORTANT: Take XDEMVY for the entire 6-week course of treatment.

- ➔ **If you're using other topical eye medications,** ensure a gap of at least 5 minutes between each
- ➔ **Remove contact lenses and wait 15 minutes** after applying XDEMVY before reinserting
- ➔ **Consult with your doctor** about continuing your eyelid hygiene routine

To report SUSPECTED ADVERSE REACTIONS, contact Tarsus Pharmaceuticals at 1-888-421-4002 or FDA at 1-800-FDA-1088 or [www.fda.gov/medwatch](http://www.fda.gov/medwatch).

**Please see Important Safety Information throughout this brochure and full Prescribing Information in pocket.**

# XDEMVY® ACCESS AND SUPPORT

xdemvy®  
(lotilaner ophthalmic solution) 0.25%



If XDEMVY is prescribed to you, your doctor will send your prescription to one of these pharmacies:

- **BlinkRx:** 1-833-919-4942
- **Carepoint Pharmacy:** 1-855-237-9112
- **CenterWell Specialty Pharmacy:** 1-800-486-2668
- **CVS Specialty Pharmacy:** 1-800-237-2767
- **Walgreens Specialty Pharmacy:** 1-800-424-9002
- **Walmart Specialty Pharmacy:** 1-877-453-4566

- 1 Once your doctor sends in your prescription, expect a text or phone call directly from the pharmacy and have your prescription drug insurance information handy

**It is important that you answer so your treatment is not delayed**

- If you don't receive a call or text within 48 hours, reach out to the selected pharmacy

- 2 The pharmacy will complete any paperwork needed with your doctor and apply any applicable savings

- 3 If a copay is needed, the pharmacy will reach out and ask you for payment; the prescription will not ship until payment is received

- 4 The pharmacy will work with you to arrange delivery to your home or local pharmacy

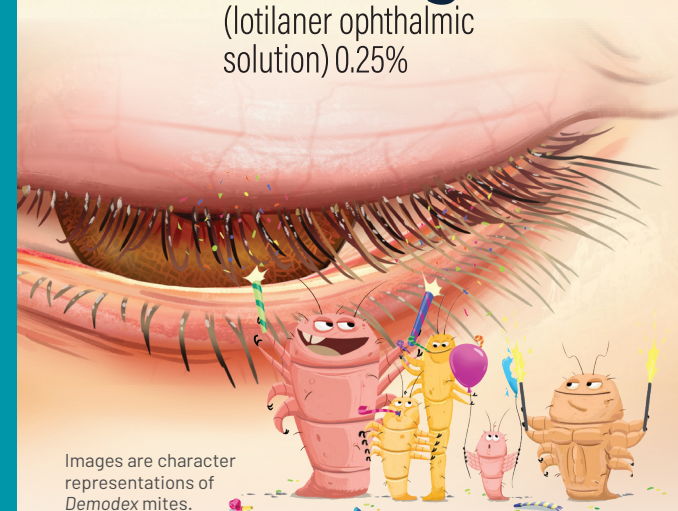
**For XDEMVY access and support, contact Tarsus Connect at 1-866-846-3092.**

**References:** 1. XDEMVY. Prescribing information. Tarsus Pharmaceuticals Inc; 2023. 2. XDEMVY Pivotal Trial Data Presentation. Tarsus Pharmaceuticals Inc. 3. Trattler W, Karpecki P, Rapoport Y, et al. The prevalence of *Demodex* blepharitis in US eye care clinic patients as determined by collarettes: a pathognomonic sign. *Clin Ophthalmol*. 2022;16:1153-1164. 4. Fromstein S, Harthan J, Patel J, et al. *Demodex* blepharitis: clinical perspectives. *Clin Optom (Auckl)*. 2018;10:57-63. 5. O'Dell L, Dierker DS, Devries DK, et al. Psychosocial impact of *Demodex* blepharitis. *Clin Ophthalmol*. 2022;16:2979-2987. 6. Rhee MK, Yeu E, Barnett M, et al. *Demodex* blepharitis: a comprehensive review of the disease, current management, and emerging therapies. *Eye Contact Lens*. 2023;49(8):311-318. 7. Yeu E, Mun J, Vollmer P, et al. Treatment of *Demodex* blepharitis with lotilaner ophthalmic solution (0.25%): combined analysis of two pivotal randomized, vehicle-controlled, multicenter trials. Presented at: ARVO 2023; April 25-27, 2023; New Orleans, Louisiana. 8. Yeu E, Wirta DL, Karpecki P, Baba SN, Holdbrook M; Saturn I Study Group. Lotilaner ophthalmic solution, 0.25%, for the treatment of *Demodex* blepharitis: results of a prospective, randomized, vehicle-controlled, double-masked, pivotal trial (Saturn-1). *Cornea*. 2023;42(4):435-443. 9. Gaddie IB, Donnenfeld ED, Karpecki P, et al. Lotilaner ophthalmic solution 0.25% for *Demodex* blepharitis: randomized, vehicle-controlled, multicenter, phase 3 trial (Saturn-2). *Ophthalmology*. 2023;130(10):1015-1023.



©2025 Tarsus Pharmaceuticals, Inc. Tarsus, the Tarsus logo, XDEMVY, the XDEMVY logo, and certain other trademarks herein are trademarks of Tarsus Pharmaceuticals, Inc. US-2500106 3/25

xdemvy®  
(lotilaner ophthalmic solution) 0.25%



Images are character representations of *Demodex* mites.

## IS THERE A MITE PARTY ON YOUR EYELIDS?



## BREAKING UP MITE PARTIES

with XDEMVY, the **first and only** FDA-approved eye drop treatment that targets and **kills the *Demodex* mites that cause *Demodex* blepharitis (DB)**.<sup>1,2</sup>

### Indications and Usage

XDEMVY (lotilaner ophthalmic solution) 0.25% is indicated for the treatment of *Demodex* blepharitis.

### Important Safety Information

**Most common side effects:** The most common side effect in clinical trials was stinging and burning in 10% of patients. Other side effects in less than 2% of patients were chalazion/hordeolum and punctate keratitis.

**Please see Important Safety Information throughout this brochure and full Prescribing Information in pocket.**

# DEALING WITH *DEMODEX* BLEPHARITIS CAN BE A CHALLENGE

Eyelid redness, inflammation, and crusties (collarettes) caused by DB that won't go away?<sup>3,4</sup>

Remember, you're not alone.

25 MILLION MITE PARTIES HAPPENING RIGHT NOW



It's estimated that approximately 25 million eye care patients in the US are affected by DB.<sup>3,5</sup>

*Demodex* blepharitis is an eyelid disease caused by an infestation of *Demodex* mites, a common mite found on humans.<sup>3,6</sup> When left untreated, DB may leave you prone to other eye-related diseases.<sup>4</sup>

Having XDEM<sup>®</sup> in your treatment plan can help you break up the mite party!



One drop per eye, twice a day (~12 hours apart), for 6 weeks.

## Important Safety Information (Cont'd)

**Handling the Container:** Avoid allowing the tip of the dispensing container to contact the eye, surrounding structures, fingers, or any other surface in order to minimize contamination of the solution. Serious damage to the eye and subsequent loss of vision may result from using contaminated solutions.

Please see Important Safety Information throughout this brochure and full Prescribing Information in pocket.

xdem<sup>®</sup>  
(lotilaner ophthalmic solution) 0.25%

## BREAKING UP MITE PARTIES WITH XDEM<sup>®</sup>

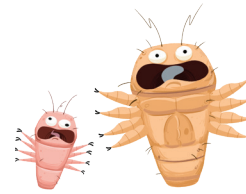
As the **first and only FDA-approved eye drop treatment** for *Demodex* blepharitis, XDEM<sup>®</sup> can kill the mites, get rid of eyelid redness, and reduce crusties (collarettes).<sup>1,2</sup> Individual results may vary.

### PROVEN TO HELP

In two combined studies, 50% of patients had a reduction of crusties (collarettes) and 60% of patients had their *Demodex* mites completely wiped out.<sup>7\*</sup> Patients using XDEM<sup>®</sup> may see eyelid redness gone in just 6 weeks.<sup>1,2</sup>

### SIMPLE DOSING

One drop per eye, twice a day, ~12 hours apart, for just 6 weeks.



### DESIGNED FOR COMFORT

~90% of patients in both trials reported XDEM<sup>®</sup> eye drops as neutral to very comfortable to use.<sup>7†</sup>

\*XDEM<sup>®</sup> for *Demodex* blepharitis was evaluated in 2 pivotal trials of 833 patients (415 received XDEM<sup>®</sup>).<sup>1,8,9</sup>

**Trial 1:** When taken twice daily in each eye for 6 weeks, compared to those who did not receive XDEM<sup>®</sup>, XDEM<sup>®</sup> reduced collarettes to 2 or fewer for the upper eyelid in 44% of patients (N=209) at Day 43; XDEM<sup>®</sup> eradicated mites (mite density of 0 mites/lash) in 68% of patients (N=212) at Day 43.

**Trial 2:** When taken twice daily in each eye for 6 weeks, compared to those who did not receive XDEM<sup>®</sup>, XDEM<sup>®</sup> reduced collarettes to 2 or less for the upper eyelid in 55% of patients (N=193) at Day 43; XDEM<sup>®</sup> eradicated mites (mite density of 0 mites/lash) in 50% of patients (N=203) at Day 43.

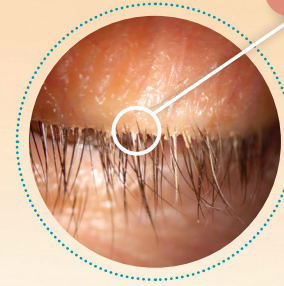
† All visits averaged.

## Important Safety Information (Cont'd)

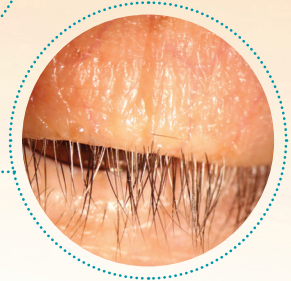
**When to Seek Physician Advice:** Immediately seek a physician's advice concerning the continued use of XDEM<sup>®</sup> if you develop an intercurrent ocular condition (e.g., trauma or infection), have ocular surgery, or develop any ocular reactions, particularly conjunctivitis and eyelid reactions.

Please see Important Safety Information throughout this brochure and full Prescribing Information in pocket.

Crusties



BEFORE XDEM<sup>®</sup>



AFTER XDEM<sup>®</sup>

Images are of actual patient who participated in clinical trials for Tarsus Pharmaceuticals. Results may vary. Patient with DB used XDEM<sup>®</sup> twice daily, in each eye, for 6 weeks.

## UNITE WITH XDEM<sup>®</sup>



LET'S WORK TO END MITE PARTIES—TOGETHER

Stay informed, receive support, and be empowered in your journey with DB.

Visit [XDEM<sup>®</sup>.com](http://XDEM<sup>®</sup>.com) for additional education, real patient stories, and more!

PARTY'S  ENDING!

## Important Safety Information (Cont'd)

**Use with Contact Lenses:** XDEM<sup>®</sup> contains potassium sorbate, which may discolor soft contact lenses. Contact lenses should be removed prior to instillation of XDEM<sup>®</sup> and may be reinserted 15 minutes following its administration.

Please see Important Safety Information throughout this brochure and full Prescribing Information in pocket.